

FREEZER M2 HIGH SPEED DOORS

CRASH FORGIVING & AUTOMATICALLY RE-INSERTING



FREEZER M2
HIGH SPEED DOORS

Designed for interior and exterior use.

*DYNACO is a unique “patented” concept offering:
The safest, fastest, best sealing doors, with the
lowest maintenance cost in the industry.*



FREEZER M2 Designed for interior and exterior environments.

Maximum standard dimensions: W 15' x H15'

Designed for interior and exterior environments where cold storage with negative temperatures to as low as -22°F are required. The door comes with an automatic cycle mode to maintain door operation in freezer applications. The control box should be mounted on the warm side, but optional cold side mounting is available.

DESCRIPTION

OPENING SPEED: 96"/sec.

CLOSING SPEED: 48"/sec.

OPERATING TYPE: gear driven, push-pull movement.

SIDE GUIDE made of structural channels of $3\frac{1}{8}'' \times 1\frac{5}{8}'' \times \frac{1}{8}''$ in galvanized steel. Protected by a layer of polyethylene in order to create a thermal barrier between the door frame and the structure of the building. Provided with heating-cables which prevent ice formation and assures the proper functioning of the door. **Warning:** in spite of the presence of heating-cables, in some applications an accumulation of ice may occur. For safety reasons, removal of the ice on the door and the floor may be required.

AIR CIRCULATION UNIT (optional)

Can be mounted within the head unit to reduce frost and ice formation.

INNER SIDE GUIDE in polyethylene (PE-UHMW 1000); outer section $7/8'' \times 1\frac{9}{16}''$, spring loaded, includes heating-cables which prevent ice formation within the side guides.

SIDE GUIDE COVERS in galvanized steel included.

DRUM in steel, diameter 4" x 0.078", shafts in steel.

DOOR CURTAIN in reinforced PVC (27 oz/sq.yd). Available in different colors and provided with stainless steel side sealing zippers (section $5/8'' \times \frac{1}{2}''$); soft bottom edge design.

MOTOR without brake, with 4 poles, controlled by a variable speed drive. Power: 2 HP. Protection degree NEMA 4.

MOTOR COVER in galvanized steel included.

GEARBOX size 63 for a motor of 2 HP and gear reduction ratio 1/7.

DETECTORS: An infrared photocell installed inside the side guide and detecting the presence of a pedestrian or a vehicle. Upon activation, it opens the door immediately and keeps it open as long as the presence is detected.

Height of the photocell: 12" from the floor. (Optional: up to maximum 24" from the floor).

A detector within the side guides reverses the door when it hits an obstacle during the closing cycle.

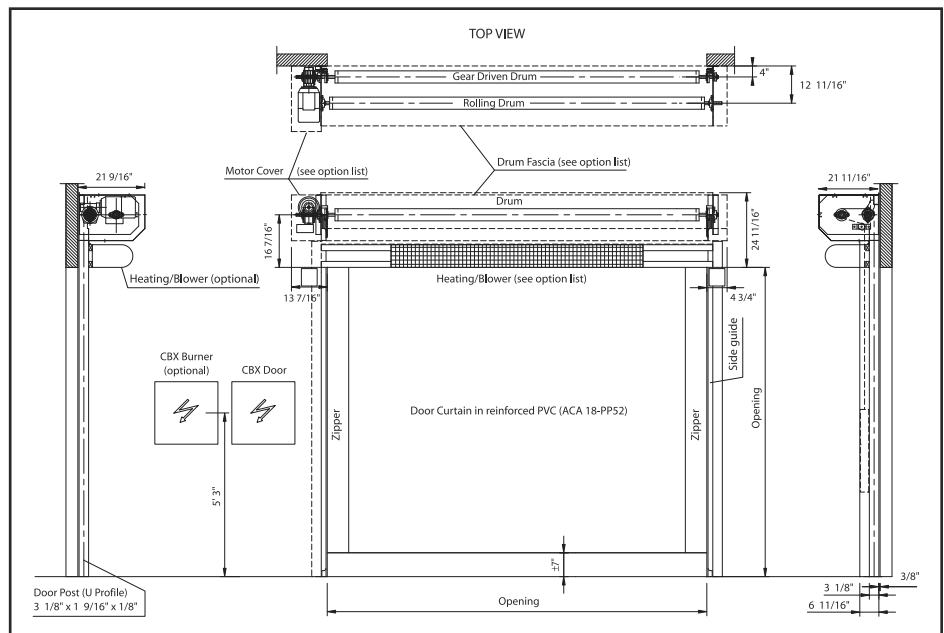
POWER SUPPLY:

Standard: single phase 208-230 VAC, three phase 208-230 VAC, three phase 460 VAC.

Optional: three phase 575 VAC. Frequency: 50-60 Hz. Fuses to be provided by the customer: 25 A for a motor of 2HP.

SPACE REQUIREMENTS:

All indicated dimensions are net: the additional space necessary for mounting and maintenance has to be taken into account. Reduced dimensions upon request.



Within the framework of its policy of continuous development of its products, DYNACO reserves the right to modify the characteristics of its products and parts without prior notice.



The Leader in Door Safety and Design